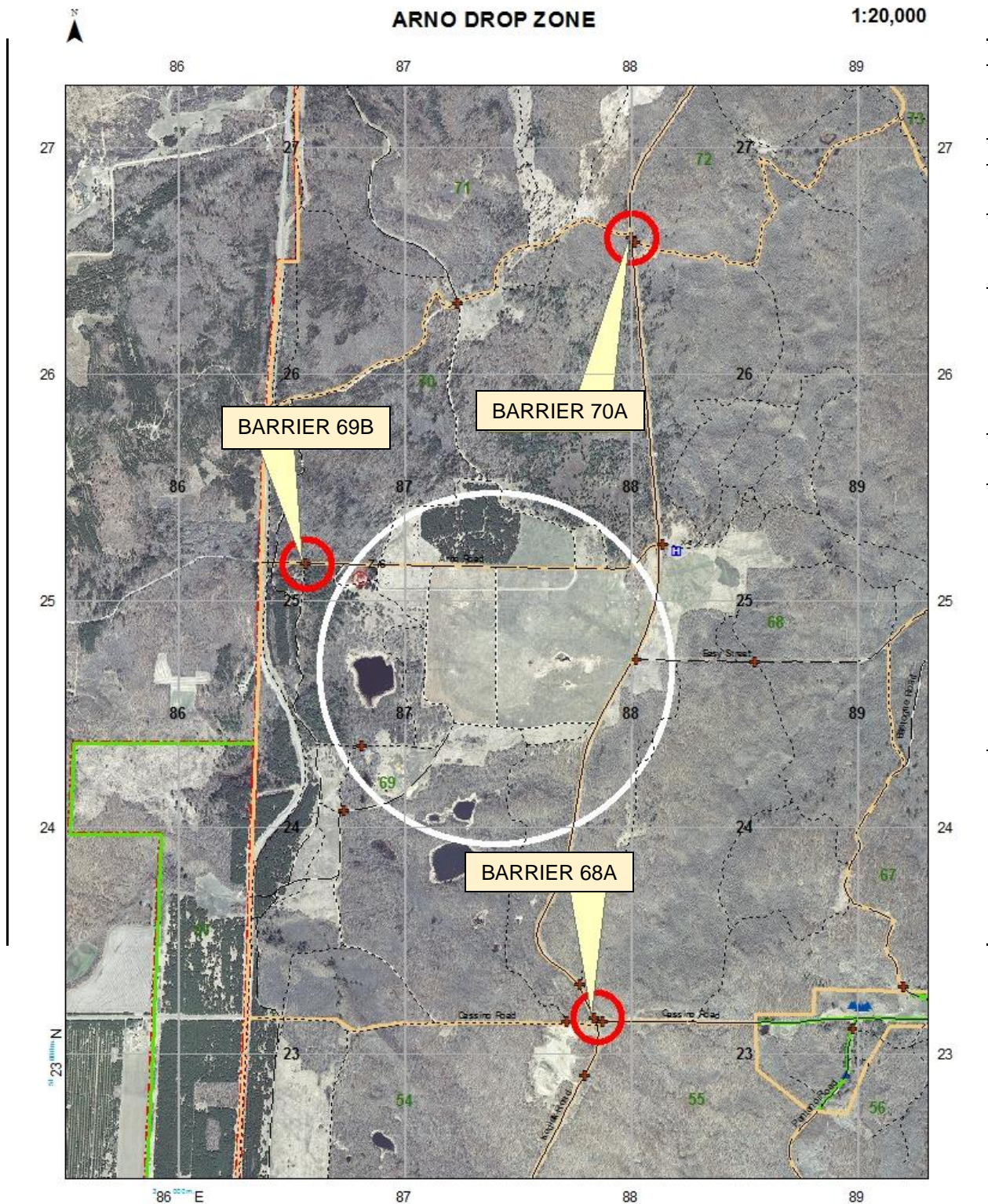


Appendix B

Drop Zones

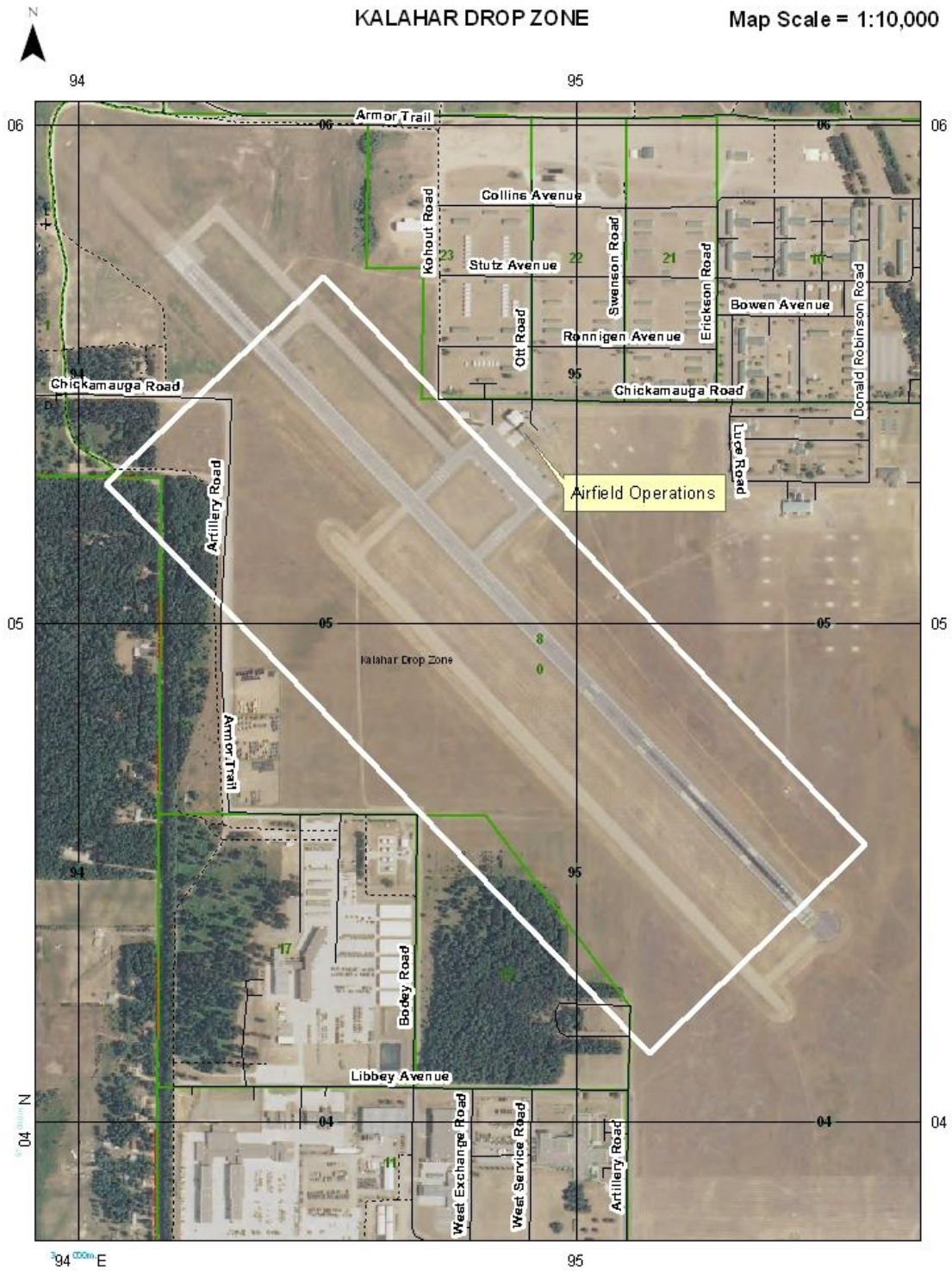
**ARNO DZ
AIR DROP ZONE**

LOCATION	UM 873249-INTERSECTION OF KODIAK ROAD AND ARNO ROAD. 18.3 MILES FROM RANGE CONTROL.
DESCRIPTION	PROVIDES TRAINING ON AIR ASSAULT, AIRBORNE, AND LOGISTICAL SUPPORT OPERATIONS. DROP ZONE IS 1100M WIDE BY 1000M LONG AND 468.68 ACRES.
FLIGHT PATH DIRECTION	MULTIPLE
LATRINE FACILITIES	NO PORTABLE TOILETS MAY BE REQUESTED THROUGH SUPPLY AND SERVICES DIV, 320-616-3128/3130.
RANGE CONTROL COMMUNICATION REQUIREMENTS	SINGGARS: 36.100 PRIMARY; 40.400 ALTERNATE TWO-WAY RADIOS WILL BE ISSUED ON A CASE-BY-CASE BASIS. UNIT MUST OPEN AND CLOSE THE RANGE WITH RANGE CONTROL. HOURLY COMMO CHECKS ARE NOT REQUIRED. RADIO MUST BE CONTINUOUSLY MONITORED.
DROP ZONE SECURITY	FOR SONDE/JPADS DROPS: RANGE CONTROL WILL INSPECT THE DZ AND CLOSE ALL BARRIERS NLT 2 HOURS PRIOR FIRST TOT. FOR ALL OTHER DROP TYPES: THE DZO WILL BE RESPONSIBLE FOR CLOSING THE FOLLOWING BARRIERS: 1) 68A 2) 69B 3) 70A
RESTRICTIONS	AVOID OVERFLYING FARMS TO THE WEST OF THE DROP ZONE. PERSONAL FLOTATION DEVICES ARE REQUIRED FOR PERSONNEL DROPS, DUE TO NUMEROUS PONDS LOCATED WITHIN THE DZ.
REMARKS	UNITS MUST CLEAN CLASSROOMS AND POLICE-CALL RANGES PRIOR TO RANGE CLEARANCES. UNITS ARE RESPONSIBLE FOR HAULING TRASH DIRECTLY TO THE TRANSFER STATION, OR TO CANTONMENT TRASH RECEPTACLES.



**KALAHAR DZ
AIR DROP ZONE**

LOCATION	MILLER ARMY AIRFIELD
DESCRIPTION	SOUTHEAST TO NORTHWEST OR NORTHWEST TO SOUTHEAST
FLIGHT PATH DIRECTION	269 DEGREES
LATRINE FACILITIES	YES-INSIDE AIRFIELD OPERATIONS OFFICE
RANGE CONTROL COMMUNICATION REQUIREMENTS	NA-ALL COMMUNICATIONS ARE CONTROLLED BY MILLER ARMY AIRFIELD OPERATIONS OFFICE
AIRFIELD INFORMTATION	ASSUALT STRIP HAS 2' X6' PANELS MARKING BOTH SIDES OF THE RUNWAY DOWN THE ENTIRE LENGTH. MAIN RUNWAY HAS 2' TALL MARKER LIGHTS ON THE SHOULDERS, AS WELL AS NAVIGATION EQUIPMENT LOCATED AT VARIOUS POINTS ON THE AIRFIELD. UNITS MUST BRIEF JUMPERS IB THESE HAZARDS.
LOCATION OF ROAD GUARDS	NA
RESTRICTIONS	<p>THE AIR FORCE RECOMMENDS SIGNLE SHIP VISUAL DROPS AS THE DZ DOES NOT HAVE A SUFFICIENT WIDTH FOR FORMATIONS OR SKE DROPS.</p> <p>LEFT TRAFFIC IS RECOMMENDED TO AVOID ZMP R-4301 TO THE NORTH OF THE DZ. MUST ALSO AVOID OVERFLYING RANDALL, MN WEST OF AIRFIELD.</p> <p>AIRCRAFT MUST USE ASSAULT STRIP TO ENSURE JUMPERS LAND SOUTH OF THE MAIN RUNWAY, TO AVOID AIRFIELD NAVIGATION EQUIPMENT NORTH OF THE RUNWAY.</p>
REMARKS	<p>USE OF THIS DROP ZONE MUST BE COORDINATED THROUGH CAMP RIPLEY OPERATIONS, 133 AW, MILLER ARMY AIRFIELD OPERATIONS, AND CAMP RIPLEY RANGE CONTROL.</p> <p>UNITS MUST CLEAN CLASSROOMS AND POLICE-CALL RANGES PRIOR TO RANGE CLEARANCES. UNITS ARE RESPONSIBLE FOR HAULING TRASH DIRECTLY TO THE TRANSFER STATION, OR TO CANTONMENT TRASH RECEPTACLES.</p>



**RIPLEY DZ
AIR DROP ZONE**

LOCATION	UM 914135-NORTHEAST CORNER OF NORMANDY ROAD AND CODY ROAD INTERSECTION. 6.6 MILES FROM RANGE CONTROL.
DESCRIPTION	PROVIDES TRAINING ON AIR ASSAULT, AIRBORNE, AND LOGISTICAL SUPPORT OPERATIONS. DROP ZONE IS 1100 METERS WIDE BY 1100 METERS LONG AND 525.81 ACRES
GENERAL DIRECTION OF FLIGHT PATH	269 DEGREES
LATRINE FACILITIES	PORTABLE TOILETS MAY BE REQUESTED THROUGH SUPPLY AND SERVICES DIV, 320-616-3128/3130.
RANGE CONTROL COMMUNICATION REQUIREMENTS	SINGGARS: 36.100 PRIMARY; 40.400 ALTERNATE TWO-WAY RADIOS WILL BE ISSUED ON A CASE-BY-CASE BASIS. UNIT MUST OPEN AND CLOSE THE RANGE WITH RANGE CONTROL. HOURLY COMMO CHECKS ARE NOT REQUIRED, BUT RADIO MUST BE CONTINUOUSLY MONITORED.
DROP ZONE SECURITY	FOR SONDE/JPADS DROPS: RANGE CONTROL WILL INSPECT THE DZ AND CLOSE ALL BARRIERS NLT 2 HOURS PRIOR FIRST TOT. FOR ALL OTHER DROP TYPES: THE DZO WILL BE RESPONSIBLE FOR CLOSING THE FOLLOWING BARRIERS: 1) 35A 2) 37L 3) TEMPORARY BARRIER AT CODY RD/LLANO GRANDE RD INTERSECTION. 4) TEMPORARY BARRIER ON CODY ROAD AND OP-1 TRAIL INTERSECTION.
RESTRICTIONS	ALL LIVE FIRE RANGES WILL BE PLACED INTO CHECKFIRE STATUS PRIOR TO AUTHORIZING AIRCRAFT CLEARANCE INTO ZMP R-4301.
REMARKS	UNITS MUST CLEAN CLASSROOMS AND POLICE-CALL RANGES PRIOR TO RANGE CLEARANCES. UNITS ARE RESPONSIBLE FOR HAULING TRASH DIRECTLY TO THE TRANSFER STATION, OR TO CANTONMENT TRASH RECEPTACLES.

